

VERA® steel shot FOR SURFACE TREATMENT

VERA® low-carbon soft steel shots are suitable for blasting of delicate materials (ex. castings), where the structure or relief of the surface must not change. They effectively and without damage clean the surface without significant increase in blasting time.

When cleaning the moulds for production of rubber and plastic parts, where the burned material must be cleaned from the mould, steel shots VERA® proved to be very suitable and effective in comparison with plastic abrasive media or glass beads, because the wear of the surface of the moulds was not increased.

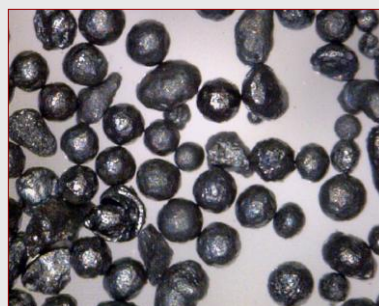
The reason for gentle, yet effective cleaning with soft steel shots lies in its specific density (7,4 kg/dm³) and large amount of shots per kilogram (approximately 55 millions in 1 kg). The hardness of soft steel shots is comparable to plastic abrasives.

Advantages of using VERA® steel shots compared to other abrasive medium:

- ◆ They don't damage the surface
- ◆ The edges remain unchanged (ex. when using glass beads, the edges eventually become rounded and unfavorable damages of the surface are shown)
- ◆ Time of blasting is heavily reduced (from approx. 10 hours when using plastic media down to 2 hours with VERA® steel shots)
- ◆ Low abrasive consumption, approx. 0,1 kg for 1 m² (for example, consumption with plastic medium is approx. 10 kg for 1 m²)
- ◆ Compressed air pressure is reduced when blasting in cabinets (with VERA® steel shots 2,5 bar air pressure is enough for blasting, when with plastic media, the air pressure must be in between 6 to 7 bar).

Technical information:

Type	Hardness	Specific density	Bulk density
VERA® steel shot	42,7 – 47,7 HRC	7,4 kg/dm ³	4,4 kg/dm ³



Steel shot is supplied in different sizes:

Available grain sizes of VERA steel shot	Area of use
0,10 – 0,20 mm	◆ Precision casting
0,16 – 0,30 mm	◆ Wire drawing shops ◆ Precision casting ◆ Special applications
0,20 – 0,40 mm	◆ Wire drawing shops ◆ Precision casting ◆ Special applications
0,30 – 0,60 mm	◆ Wire drawing shops ◆ Precision casting ◆ Special applications
0,40 – 0,80 mm	◆ Machinery engineering ◆ Wire drawing shops ◆ Special applications
0,60 – 1,00 mm	◆ Foundries ◆ Steel construction ◆ Machinery engineering
0,80 – 1,25 mm	◆ Foundries ◆ Steel construction ◆ Machinery engineering
1,00 – 1,60 mm	◆ Foundries ◆ Steel construction ◆ Machinery engineering
1,25 – 2,00 mm	◆ Foundries ◆ Steel construction
1,60 – 2,24 mm	◆ Foundries
2,00 – 2,80 mm	◆ Foundries
4,00 – 6,00 mm	◆ Shot beading

Steel shot Vera is supplied in 25-kilogram plastificated bags, on a pallet.

Dolenjske Toplice, January 2009